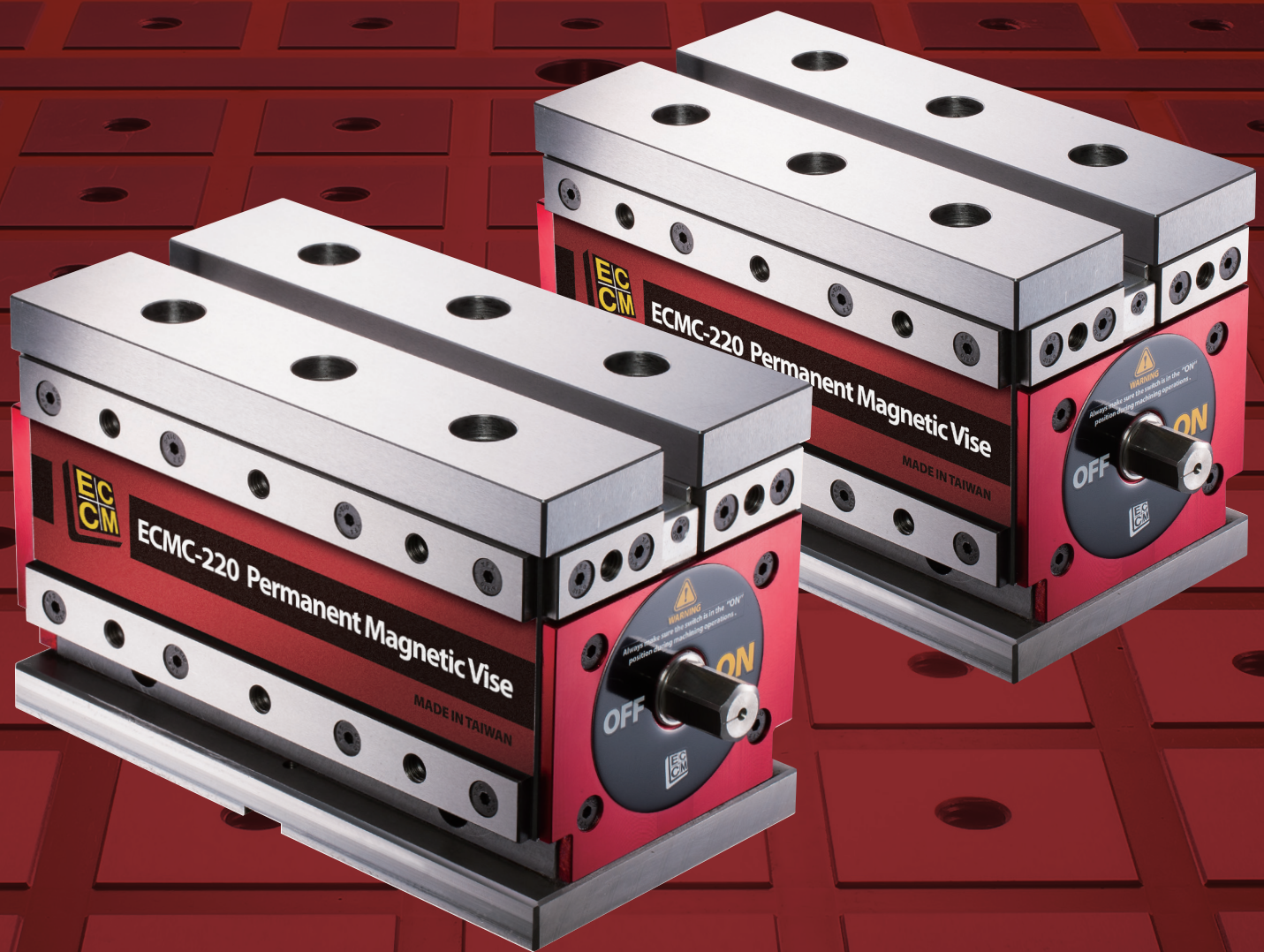


PERMANENT MAGNETIC VISE

Significantly upgrade CNC Machining Centers



Scan QR Code To
Watch The Application

Permanent Magnetic Vise

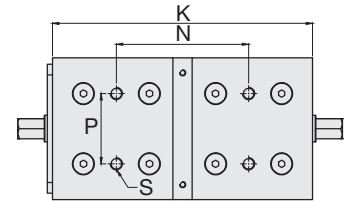
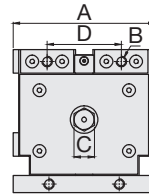
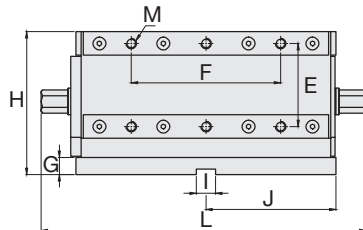
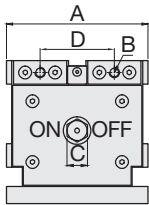
ECMC-220.130

- Suitable for the magnetic material processing
- Quick clamping the workpiece and provide five-sided processing
- Work with various magnetic soft jaws, flexible adjustment and configuration according to processing needs



STANDARD ACCESSORIES:

- 2 pcs of Stopping Block
- 4 pcs of Clamp
- 1 pc of Handle
- 2 pcs of Alignment Wedge



SPECIFICATIONS

Unit: mm

Model	A	B	C	D	E	F	G	H	I	J	K	L
ECMC-380	188	M10	23	92	122	160	18.5	187.5	18	139	278	344
ECMC-220	133	M10	19	69.5	78	140	15	134	18	122	244	305
ECMC-130	108	M8	13	56.5	62	95	12	108	18	99	198	230
ECMC-75	76	M6	13	40	43.5	84	10	78	18	89.5	179	213

Model	M	N	P	S	Holding magnetic force	Minimum workpiece thickness requirement	Weight (kg)
ECMC-380	M10	140	90	M12	3300kgf±5%	40	70
ECMC-220	M10	124	66	M12	2100kgf±5%	30	39
ECMC-130	M8	100	48	M10	1200kgf±5%	20	20
ECMC-75	M6	92	38	M8	760kgf±5%	15	10



HOMGE MACHINERY IND. CO., LTD.

© 2018 COPYRIGHT. HOMGE MACHINERY.